

SKKD 260



SEMIPACK[®] 3

Rectifier Diode Modules

SKKD 260

Features

- Heat transfer through aluminium nitride ceramic isolated metal baseplate
- Precious metal pressure contacts
- UL recognized, file no. E 63 532

Typical Applications

- Non-controllable rectifiers for AC/AC converters
- Line rectifiers for transistorized AC motor controllers
- Field supply for DC motors

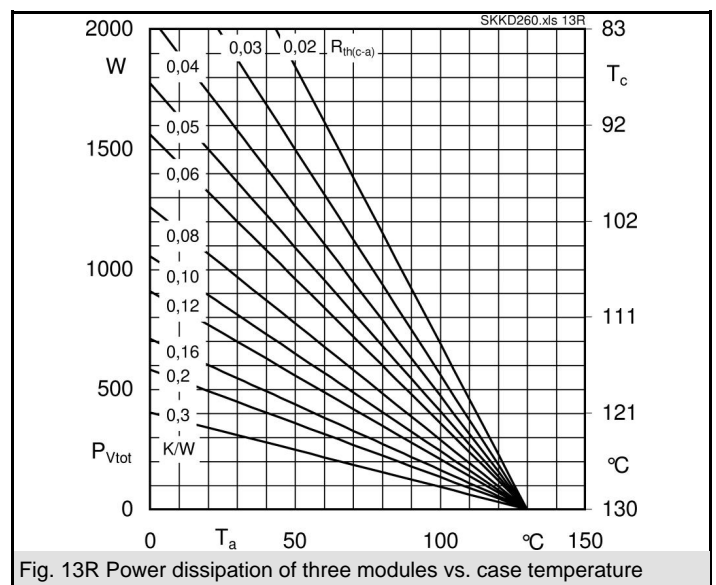
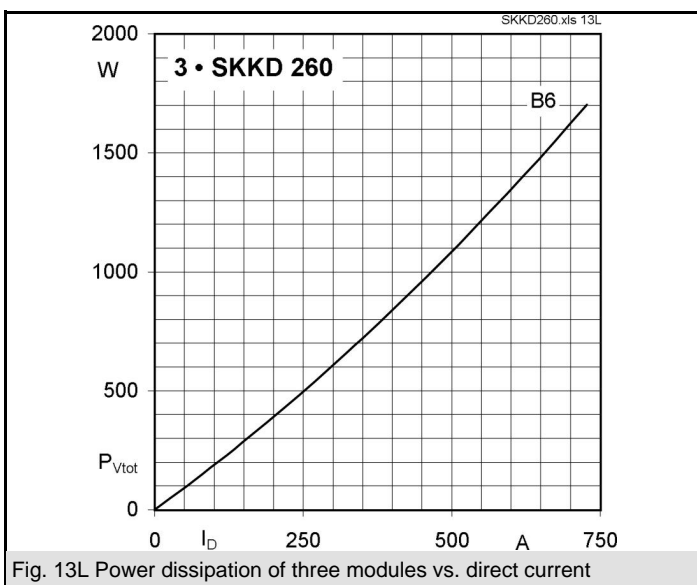
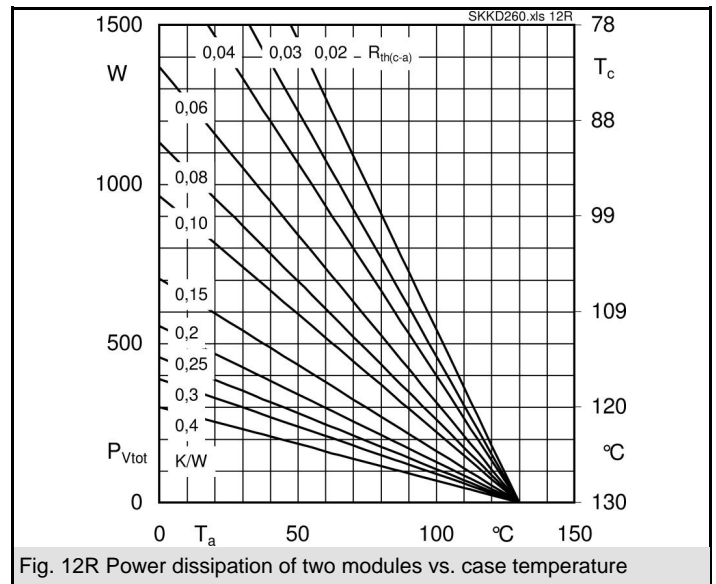
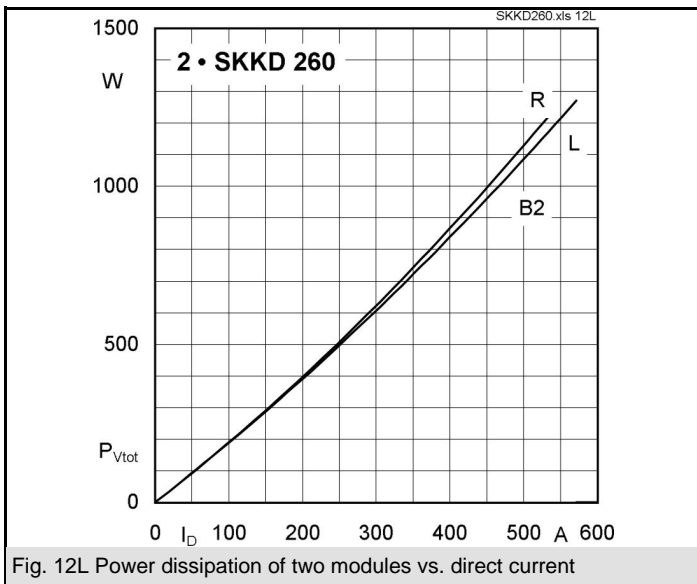
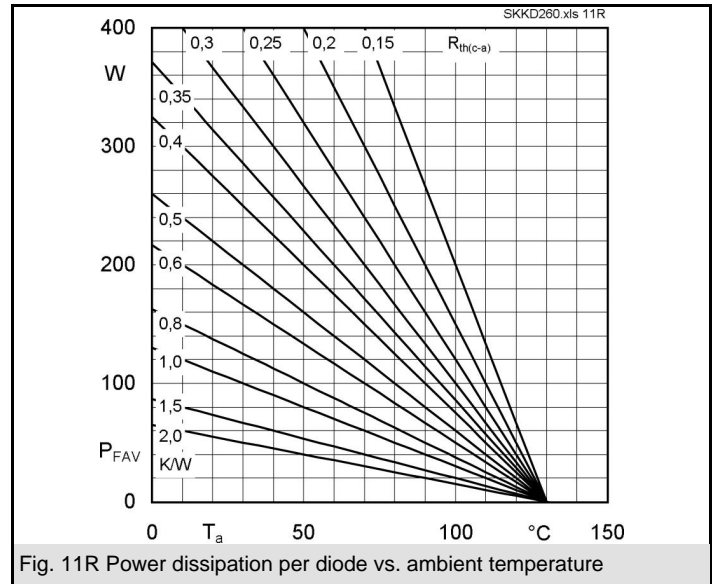
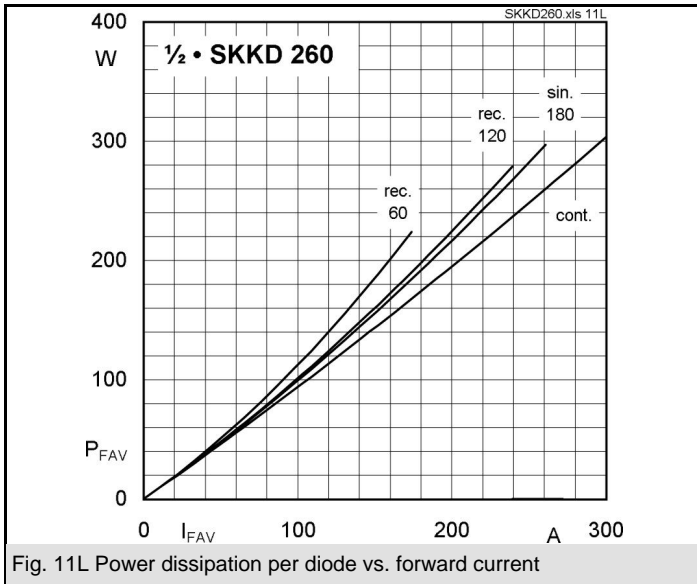
1) The screw must be lubricated

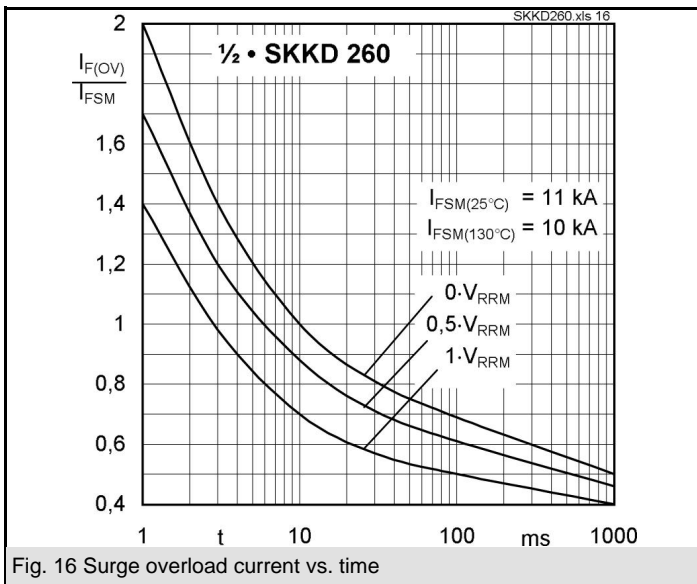
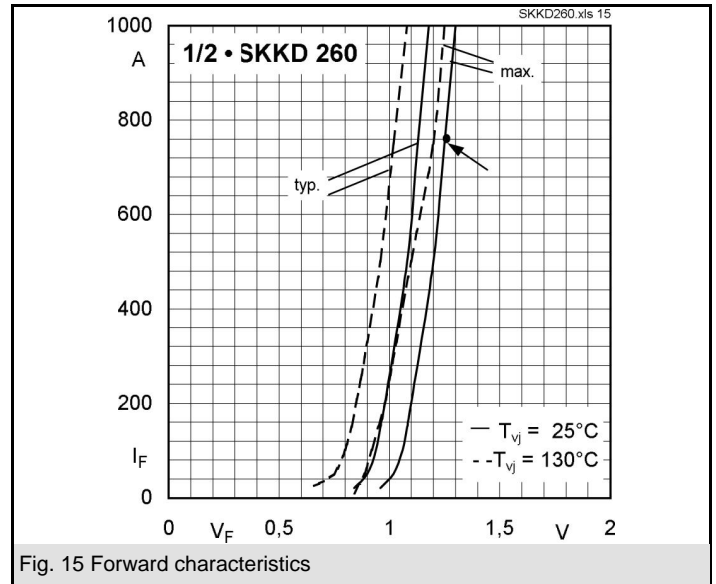
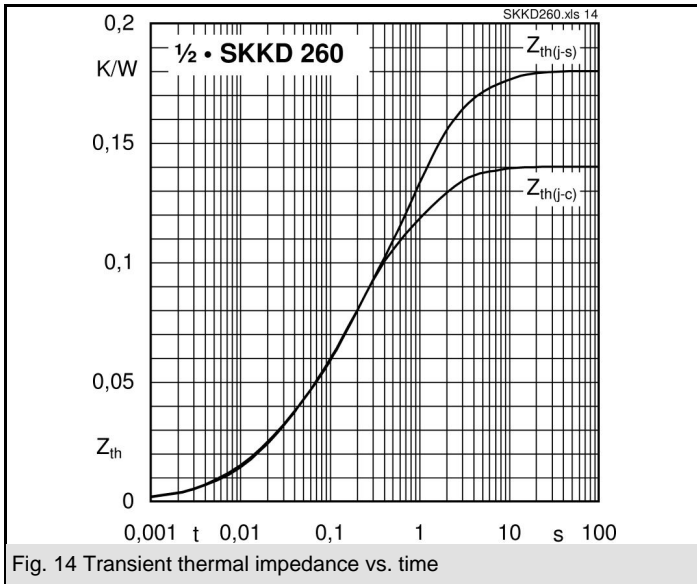
| V_{RSM} V | V_{RRM} V | $I_{FRMS} = 410$ A (maximum value for continuous operation) $I_{FAV} = 260$ A (sin. 180; $T_c = 85$ °C) | |
|----------------|----------------|--|--|
| 900 | 800 | SKKD 260/08 | |
| 1300 | 1200 | SKKD 260/12 | |
| 1500 | 1400 | SKKD 260/14 | |
| 1700 | 1600 | SKKD 260/16 | |
| 2100 | 2000 | SKKD 260/20H4 | |
| 2300 | 2200 | SKKD 260/22H4 | |

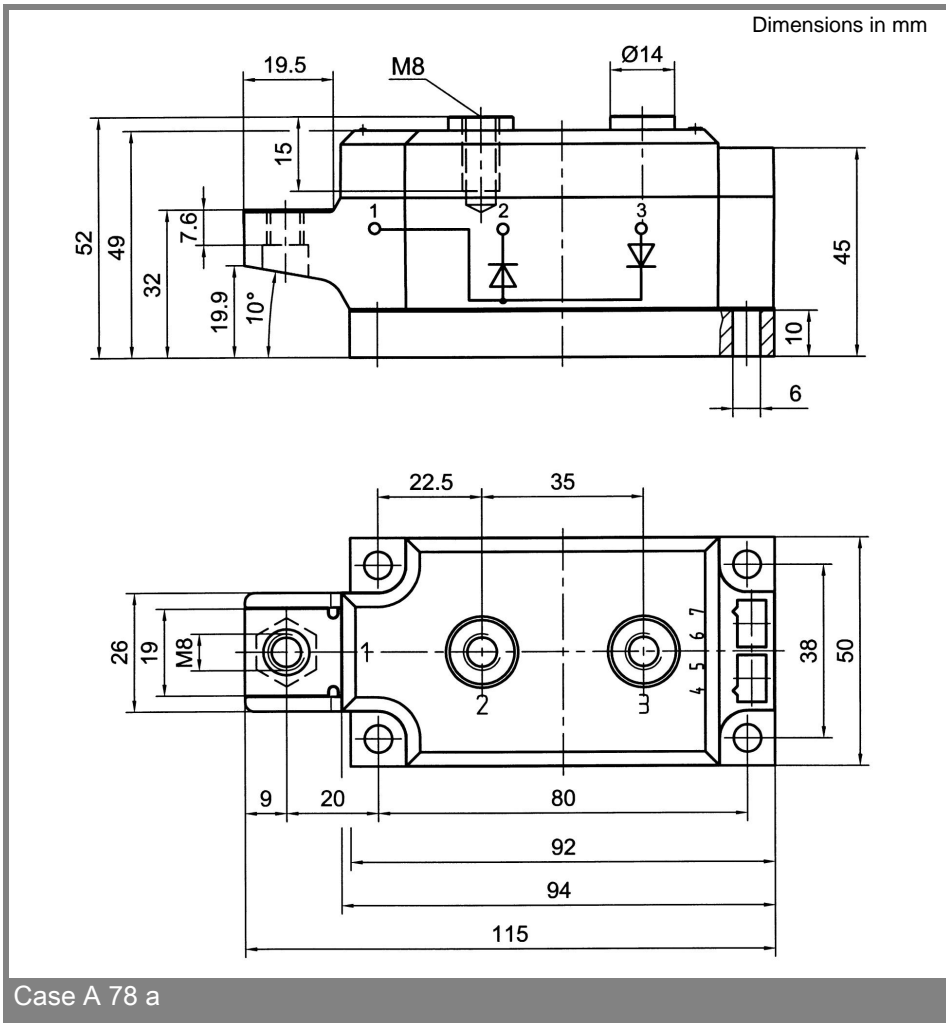
| Symbol | Conditions | Values | Units |
|---------------|---|------------------------|------------------|
| I_{FAV} | sin. 180; $T_c = 85$ (100) °C | 260 (185) | A |
| I_D | P3/180F; $T_a = 35$ °C; B2 / B6 | 280 / 320 | A |
| | P3/180F; $T_a = 35$ °C; B2 / B6 | 490 / 655 | A |
| I_{FSM} | $T_{vj} = 25$ °C; 10 ms | 11000 | A |
| | $T_{vj} = 130$ °C; 10 ms | 10000 | A |
| i^2t | $T_{vj} = 25$ °C; 8,3 ... 10 ms | 605000 | A ² s |
| | $T_{vj} = 130$ °C; 8,3 ... 10 ms | 500000 | A ² s |
| V_F | $T_{vj} = 25$ °C; $I_F = 750$ A | max. 1,25 | V |
| $V_{(TO)}$ | $T_{vj} = 130$ °C | 0,9 | V |
| r_T | $T_{vj} = 130$ °C | 0,37 | mΩ |
| I_{RD} | $T_{vj} = 130$ °C; $V_{RD} = V_{RRM}$ | max. 15 | mA |
| $R_{th(j-c)}$ | cont.; per diode / per module | 0,14 / 0,07 | K/W |
| | sin. 180; per diode / per module | 0,15 / 0,075 | K/W |
| $R_{th(c-s)}$ | per diode / per module | 0,04 / 0,02 | K/W |
| T_{vj} | | - 40 ... + 130 | °C |
| T_{stg} | | - 40 ... + 130 | °C |
| V_{isol} | a. c. 50 Hz; r.m.s.; 1 s / 1 min. | 3600 / 3000 | V~ |
| V_{isol} | a. c. 50 Hz; r.m.s.; 1 s / 1 min. for SKK ...H4 | 4800 / 4000 | V~ |
| M_s | to heatsink | 5 ± 15 % | Nm |
| M_t | to terminals | 9 ± 15 % ¹⁾ | Nm |
| a | | 5 * 9,81 | m/s ² |
| m | approx. | 750 | g |
| Case | | A 78a | |



SKKD







This technical information specifies semiconductor devices but promises no characteristics. No warranty or guarantee expressed or implied is made regarding delivery, performance or suitability.